

## Bullet trap SCR01



The SCR01 unloading box (bullet trap) has been designed to ensure safe and easy unloading of weapons, catching ejected bullets and safely stopping accidental discharges.

The opening of the cone allows the pistol barrel to be placed in the unloading station so that the ejected bullet is caught and does not fall on the floor.

Used for lead bullets, full metal jacket bullets or semi-jacketed bullets, with kinetic energy ranging from 220 to 617 J and velocity ranging from 286 to 375 m/s.

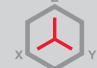

Model recommended for:

 handguns

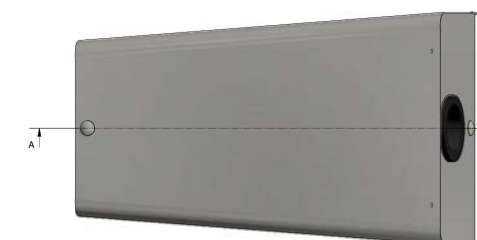
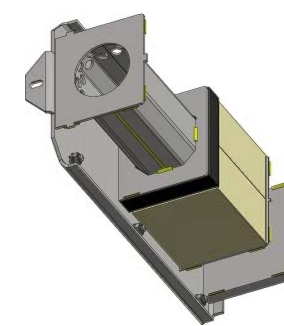
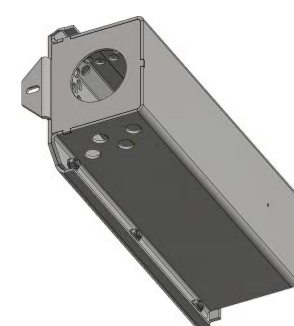
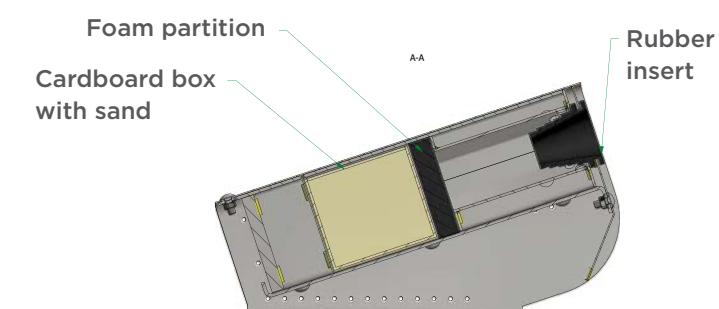
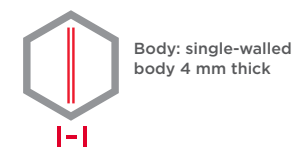
### Product description

- 4 mm sheet metal capture core
- absorption chamber filled with sand (sand included with the product in a cardboard box)
- foam at the chamber entrance
- duct opening secured with a rubber insert
- core and cover perforated to reduce shock waves

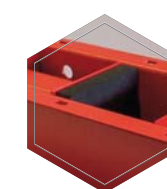


Art. No.	Model	Outer dimensions*			Weight
					
		Height mm	Width mm	Depth mm	Kg
50295.00	SCR01	275	278	493	4

## Bullet trap SCR01



### Accessories available against surcharge



EVA 200 foam plate




shock-absorbing insert



rubber bush



 All information concerning weight, color and dimensions are noncommittal and subject to errors and changes. Minor deviations are conditional on the production process. Technical changes, modifications and printing errors reserved. Safes may be top-heavy, during commissioning, please exercise appropriate caution in accordance with the installation guide. Pictograms are not technical description of the product.